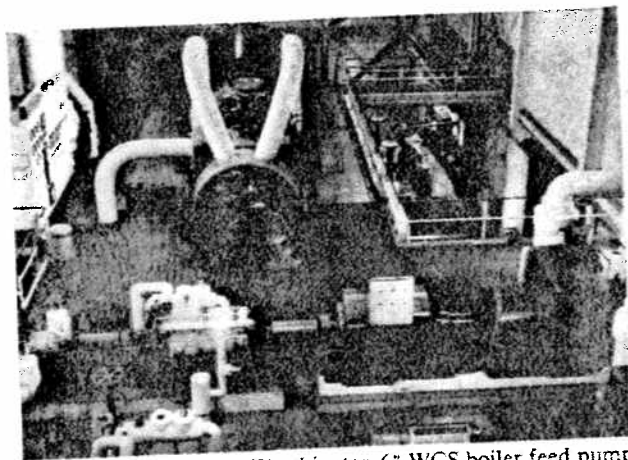


FOUR OF THE FIVE Worthington boiler feed pumps in P.G.&E.'s Station "P" in San Francisco. Each of the pumps shown here delivers 1,340 gpm against a discharge pressure of 1,868 psig.

P.G. & E. installs 45 Worthington high pressure boiler feed pumps over 15-year period



LOOKING DOWN on a Worthington 6" WCS boiler feed pump at the Oleum Station of P.G.&E.

• Pacific Gas and Electric Company, with 3,540,200 kw installed capacity, serves 5½ million people in 46 of California's 58 counties. It's been building new generating plants right and left to keep up with the power needs of this booming area.

P.G.&E. is a satisfied Worthington customer. Since 1938 a total of 40 high-pressure boiler feed pumps have gone to work in seven different stations of the P.G.&E. network — proof that they do a real job for this West Coast utility. And five more of these sturdy Worthington pumps are being built for P.G.&E. right now, all designed to handle pressures over 1850 psig. This is also evidence that Worthington's design and engineering techniques are keeping right up with the greater capacities and pressures of today's steam generating units.

You can put this extensive experience in pump design and manufacture to work in your plant. For details, check with your Worthington district office or write for Bulletin W319B-1C to Worthington Corporation, Centrifugal Pump Division, Harrison, New Jersey.

C.3.6



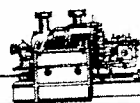
For Boiler Feed Service. Capacities to 1,500 GPM; Heads to 1,000 feet.



For Hotwell, Condensate, Chilled Water Service. Capacities to 1,400 GPM; Heads to 650 feet.



For Water Works. Circulation, Drainage, General Service. Capacities to 135,000 GPM; Heads to 400 feet.



For Boiler Feed Service. Capacities to 3,000 GPM; Heads to 7,000 feet.



The World's Broadest Line Assures You the Right Pump for Every Job