

THE WORTHINGTON Marine

Prepared by Worthington Pump and Machinery Corporation, Harrison, New Jersey, U. S. A.

New, Constant-Speed, High-Pressure Boiler Feed Pump Simplifies 0-100% Capacity Control



Ten Worthington Features Explain High Efficiency, Reduced Operating Costs, Uninterrupted Shipboard Service

The new Worthington Automatic VARIFLO Triplex Power Pump

The reasons why the Worthington Automatic VARIFLO Triplex Power Pump is your best selection for a high pressure feed pump for boilers and desuperheaters are summed up in the following 10 features:

1. A simple, compact, proved stroke-changing mechanism gives stepless capacity variation from 0% to 100%.
2. Drive shaft and stroke-changing mechanism comprise a self-contained assembly, all parts pressure-lubricated.
3. Stuffing boxes on top of the cylinder . . . an exclusive Worthington design . . . make routine attention easy.
4. Worthington patented flange and screw type stuffing box gland tightens evenly on packing. Gland cannot become cocked when adjustment is made.
5. Full accessibility of plungers, valves and running parts simplifies operation and maintenance.
6. High efficiency applies over full range of capacity and pressure . . . whether your pressure is 500 or 5000 PSI.
7. Low power consumption results from standard constant speed motor or turbine.
8. Crankshaft is at the bottom, engine-style, so that loads are transmitted and supported close to foundation.
9. Lubrication is fully automatic with splash and pressure system to all bearings.
10. Running parts are fully enclosed.

Add all these features together and you'll see why you'll want to read Bulletin W-414-B50 to get full information on Worthington VARIFLO Power Pumps. Write for it today and learn why there's more worth in Worthington.

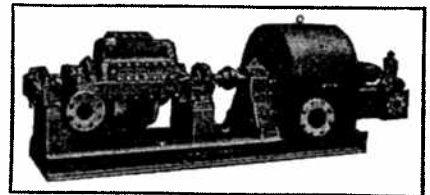
WORTHINGTON



Worthington Engineers from the Rough Layout to the Ships at Sea

Turbines & Turbine-Generator Sets . . . Centrifugal, Steam, Power, Vertical Turbine & Rotary Pumps . . . Compressors . . . Diesel Engines . . . Air Conditioning & Refrigerating Equipment . . . Power Plant & Transmission Equipment . . . Liquid Meters . . . Welding Post-Heaters . . . Deserating Feedwater Heaters . . . Condensers.

Worthington Multi-Stage Centrifugals Simplify Maintenance



Balanced design is the reason why Worthington Type UR Six-Stage Volute Pumps stay out of trouble longer in small-capacity boiler feed installations. Staggered volutes offset radial thrust . . . an equal number of impellers faced in each direction eliminates end thrust without balance drum or disc.

Other maintenance savers are: elastic seal rings and tight lateral sealing of all diaphragms and casings that prevent interstage leakage; horizontally split casing that makes parts easily accessible.

Seaworthy Worthington Vertical Condensate Pumps



Where every inch of floor space is needed, a Worthington Type UZS Two-Stage Vertical Condensate Pump is the answer. Vertical mounting also raises motor safely above bilgewater level when installed on ship's tank . . . assures dependable performance by placing first stage impeller at the lowest possible level. Hydraulically correct design combines over-

size suction openings, pickup type impellers and generous vents . . . Capacities, 10 to 500 GPM; heads, 60 to 260 ft.

3 More Reasons Why There's More Worth in Worthington

1. Worthington has offices and representatives for sales and service in every important country in the world.
2. Worthington tags repair and replacement parts so that you can be sure they're genuine. Insist on them.
3. Worthington's engineering and service on all its marine products are carried all the way through from rough sketch to the ships at sea.

the material used made by the manu- or filtering heavy- available to commerc- Hyflow oil filters

at present operators ing heavy-duty Dis- municate with the f- ormation.

de Bomb

mass Aer-A-Sol insect- ced by the Bridge- eport, Conn., is- tive new multi-pur- commercial, public- d ships of flies, co- itoes, gnats, fleas, b- nilar pests. xture expelled from- developed by the U- iculture. It contain- pyrethrum extract- n insects and 3 per- final kill. These ac- olved in a naphtha- re mixture is comb-



e liquefied Freon p- lling force. DDT is a desired ca- on that offers no ha- U. S. Public Hea- No. 183, if used in- manufacturer's instr- Brass Company- sol bombs to the Ne-

e for Tracy unched

t of four new 142- & J. Tracy Comp- unched recently at- ards of Dravo C-

Mrs. A. A. Low, the vessel was nam- sident of the Com- y, of New York, ow, famed first ma- city of New Yo- first of a new bo- d by M. & J. Tr- large fleet built- o Corporation.

g and Shipping Re-

January, 1946